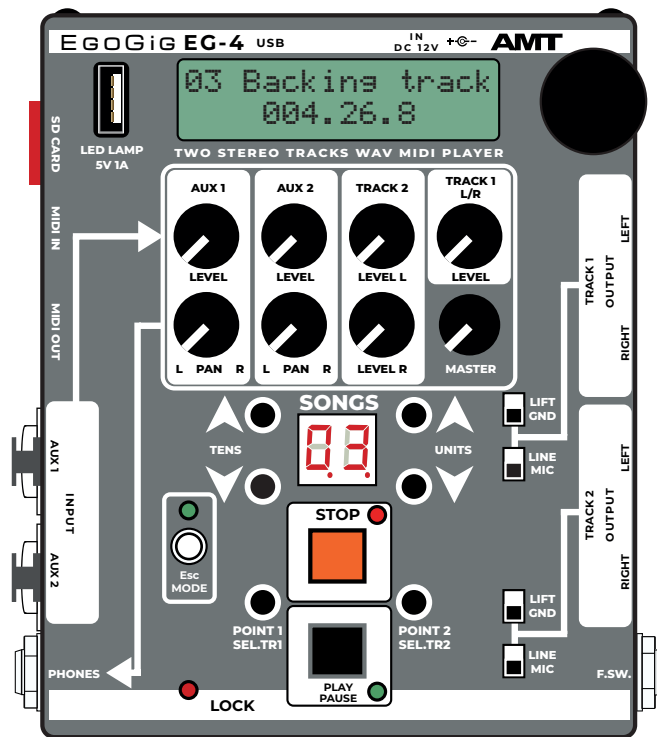


AMT

4-channel WAV &
MIDI Stereo Player &
personal monitor mixer

EGOGiG EG-4



SHORT USER'S GUIDE

QUICK START

ENG (Rev. 4)

Relevant for firmware Ver. 1.02.01 or newer:
media.amtelectronics.com/firmware-for-eg-4/

©2025 AMT Electronics. Omsk, Russia
The contents of this manual are subject to change
without prior notice.

www.amtelectronics.com

1. PLEASE STUDY THIS BEFORE YOU START TO WORK WITH EG-4

1. Do not use the demo microSD card for full operation



The microSD memory card supplied with the EG-4 device is a **demonstration card and is not intended for further permanent use as part of professional work.**

The User must independently **purchase and use a new memory card** (from the range available on the modern market) with the characteristics listed below.

2. Your working microSD card must strictly comply with the technical requirements



Before starting work, you should make sure that the memory card you are using meets **all of the following characteristics** without exception:

- microSD memory card **capacity: 8, 16, 32 or 64 Gb**;
- Memory card **class: at least 10**;
- **Read speed: from 100 Mb/s and above.**
- Before using the microSD card, **it must be formatted strictly in FAT32** (do not forget that all data stored on the card will be lost)

It is necessary to use only **HIGH-QUALITY MicroSD CARDS** used by professional photographers for **high-speed shooting!** Please note that a high-quality memory card of this kind will not be cheap, and what matters here is not the theoretical reading speed indicated by marketers on the package, but **the actual value after testing such a flash drive.**

3. Properly remove the microSD memory card from the EG-4 device

The memory card is removed from the EG4 device by gently pressing the side edge of the micro SD card visible from the device's card reader (with a finger nail or a small flat plastic object like a guitar pick) when **the power is off.**

4. Insert the microSD memory card correctly into the EG-4 card reader



ATTENTION!

The micro SD memory card is installed in the EG-4 device **strictly with the contacts facing up** — exactly as shown in Fig. 1. on the left (until the characteristic click)! Otherwise, you risk damaging the card reader!

Fig. 1. — An example of **the correct** (left - «contacts up») and **incorrect** (right — «contacts down») orientation of the microSD memory card in space relative to the AMT Agogic EG-4 device



5. Be sure to check the EG4 firmware version and install the latest one

At the moment of power supply to the EG-4, the LCD display of the device briefly displays the version number of the installed firmware. Compare it with the number of the latest firmware published in the AMT Media Center at the link: <https://media.amtelectronics.com/firmware-for-eg-4/>

If an older firmware is installed on your device, then use the link above to download and install the latest up-to-date firmware version for EG-4.



6. Export your WAV tracks from DAW correctly



The export of audio materials from the DAW **must be performed strictly with the following output file settings:**

- Output format: **WAV**
- Sample rate: **44100 Hz**
- Channels: **Stereo**
- WAV bit depth: **16 bit PCM (Windows PCM)**

7. Be sure to use the WAV file converter

Immediately after exporting WAV files from the DAW and **before copying audio files to the microSD** card of the AMT EgoGig device, it is mandatory to **convert all your WAV files using the free AMT EgoGig Converter application** (Win / macOS): <https://media.amtelectronics.com/egogig-converter/>



8. Use a USB card reader to connect your microSD card to your computer



Carefully remove the memory card from the EG-4, **insert it into any external USB card reader** (or other adapter type «micro SD → USB») and connect this card reader to an available USB port of your computer. This will allow you to work from any PC/Mac with a micro SD memory card of the EgoGig EG-4 device as with a regular «flash drive» directly.



The **USB B** connector (USB Type-B port) on the back of the G4 **is intended exclusively for updating the device firmware** (as an additional method).

Due to a number of limitations, this port is **NOT INTENDED** for exchanging WAV/MIDI data from a PC and working in the **Application for AMT EgoGig EG-4** via a USB cable!

9. Use the «Application for AMT EgoGig EG-4» to work with playlists

To upload all necessary WAV and MIDI files to a microSD card, and also for easy and convenient creation/editing of playlists, use a special free **application for AMT EgoGig EG-4** (Win / macOS):

<https://media.amtelectronics.com/egogig-app/>



We do not recommend uploading too many WAV files to any one specific folder of the «SONGS» directory of the memory card, from which songs of a particular playlist will be formed.

It is best to create several different folders in the «SONGS» directory and limit **the total number of WAV files in one such folder up to 80 pcs.**

10. Do not forget to format the memory card periodically



With frequent creation/editing of playlists through connecting a memory card to a PC, fragments of hidden temporary «junk» files automatically created by one or another operating system may remain and accumulate on the micro SD card.

Therefore, **it is necessary to format the memory card periodically**, following the basic algorithm:

- 1) Create a backup of the full contents of the folders **PLAYLIST** and **SONGS**, as well as the system file **system.ego** of your microSD card on the PC/Mac;
- 2) **Format** this microSD card to FAT32;
- 3) **Copy the previously created backup** from the PC back to the root of the memory card;
- 4) **Insert the memory card into the EG-4**, supply power to the device;
- 5) After loading, **the device is ready to work!**

2. How to update the firmware on EG-4

1. Turn off the power to your EgoGig device.
2. Carefully remove the microSD card from the card reader of the EG-4.
3. Insert this card into any external USB card reader and connect it to your computer.
4. Wait for the moment when your computer's operating system detects the «flash drive» that has just been connected.
5. Download the latest actual firmware (zip archive) published in the AMT Media Center at the link: <https://media.amtelectronics.com/firmware-for-eg-4/>
6. Open the previously downloaded archive like **EgoGig_EG-4_FW_v.X.XX.XX_(DD-MM-YY).zip** and find the «firmware» file there.
7. Copy the «firmware» file to the root directory of the connected microSD card.
8. At the end of the copying process the «firmware» file, **safely disconnect** the memory card from the computer and remove it from the card reader.
9. Carefully insert the microSD card into the EG-4 card reader (with the contacts facing up and towards the entrance to the card reader — as shown in Fig. on the right).



The firmware for EG-4 is a file of the form «firmware» (note: there is no dot symbol «.» and extension in the file name!).

10. Connect the recommended **power supply** to the mains and to EgoGig. **The firmware update will start immediately after that.** Follow this process on the display of the EG-4 device.



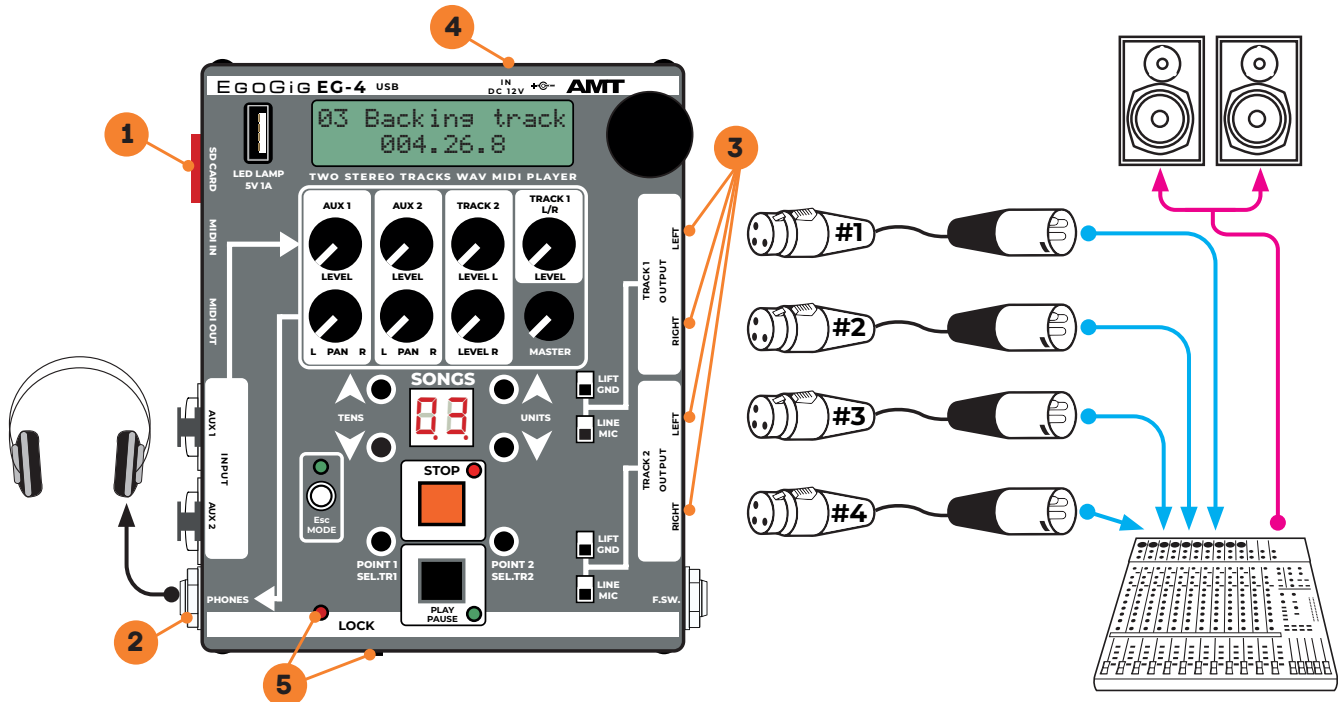
Do not disconnect the power cord from the device until the upgrade process is complete! Turning off the power before this point can lead to malfunction and failure of the device!

11. When «Reset device power» appears on the EG-4 display, **turn off** the EgoGig device.
12. **Power the EG4 with the power supply again.** Follow the information on the EG-4 display.
13. After checking the firmware version number and folder structure, **the EgoGig EG-4 device will be ready** for operation within a few seconds.



*Please note that after the successful completion of the firmware update process of the EG-4 device, **the «firmware» file will be automatically deleted** from the root directory of the memory card. For this reason, after successful firmware updating, the next time you connect the memory card to your computer, **the installation file «firmware» will be missing from the root of the flash drive!***

3. The first launch of the AMT EgoGig EG-4



1. Make sure that the micro SD card with the pre-created in the App <https://media.amtelectronics.com/egogig-app/> is correctly inserted into the card reader [1] of the EG-4 device at least one playlist containing at least one song.

2. Connect the headphones to the output **PHONES** [2] of your EG-4 device.

3. Connect the **CHANNELS** [3] outputs the EgoGig by cables «XLR female — XLR male» (regular microphone cables) to the appropriate channels of the mixing console (with speakers connected).

4. Connect the supplied power supply to the EgoGig connector [4] and then to the power outlet.

5. Make sure that the **LOCK mode switch** [5] is not active (the LED is off).

6. Wait until the device is loaded.

7. The device is ready to work!



4. Selecting/changing the current playlist on EG-4

Immediately after powering up and loading the device, the EgoGig automatically selects **the last previously selected playlist as active**.

When you turn on the device for the first time (for example, after purchase), it could be a «**DEFAULT**» playlist located on the demo microSD card supplied with the AMT EgoGig EG-4 device included.

If there are no songs in this playlist, you will see the following message on the device display: «**No files in Playlist**». This means that you either need **to fill in the current playlist, or change it to another one**.

The algorithm for changing the current playlist to another one:

1. By pressing the «**Esc/MODE**» button, we enter the menu of the EG-4 device.
2. Select the menu item «**Select PL**» and **briefly press** the Encoder.
3. **By rotating the Encoder** (and visually tracking on the EG-4 display), we find the name of the playlist folder we need.
4. Select this playlist by **long-pressing (!)** the Encoder.
5. At the end of selecting a playlist as the currently active one, the message «**Select OK!**» appears on the device display, after which the name of the playlist that has just been selected as the active one will be displayed.
6. By pressing the «**Esc/MODE**» button, exit the EG-4 device menu.



The name of the playlist **is set in advance**, at the moment of its creation in the EgoGig App for the computer: <https://media.amtelectronics.com/egogig-app/>



ATTENTION! Setting the playlist as active is done by LONG pressing on the Encoder!

A **short press** on the Encoder in this case will only redirect you inside the folder to view a list of all available songs of this playlist in the «*.ego» format, but will not ensure its activation as the main playlist, be careful!

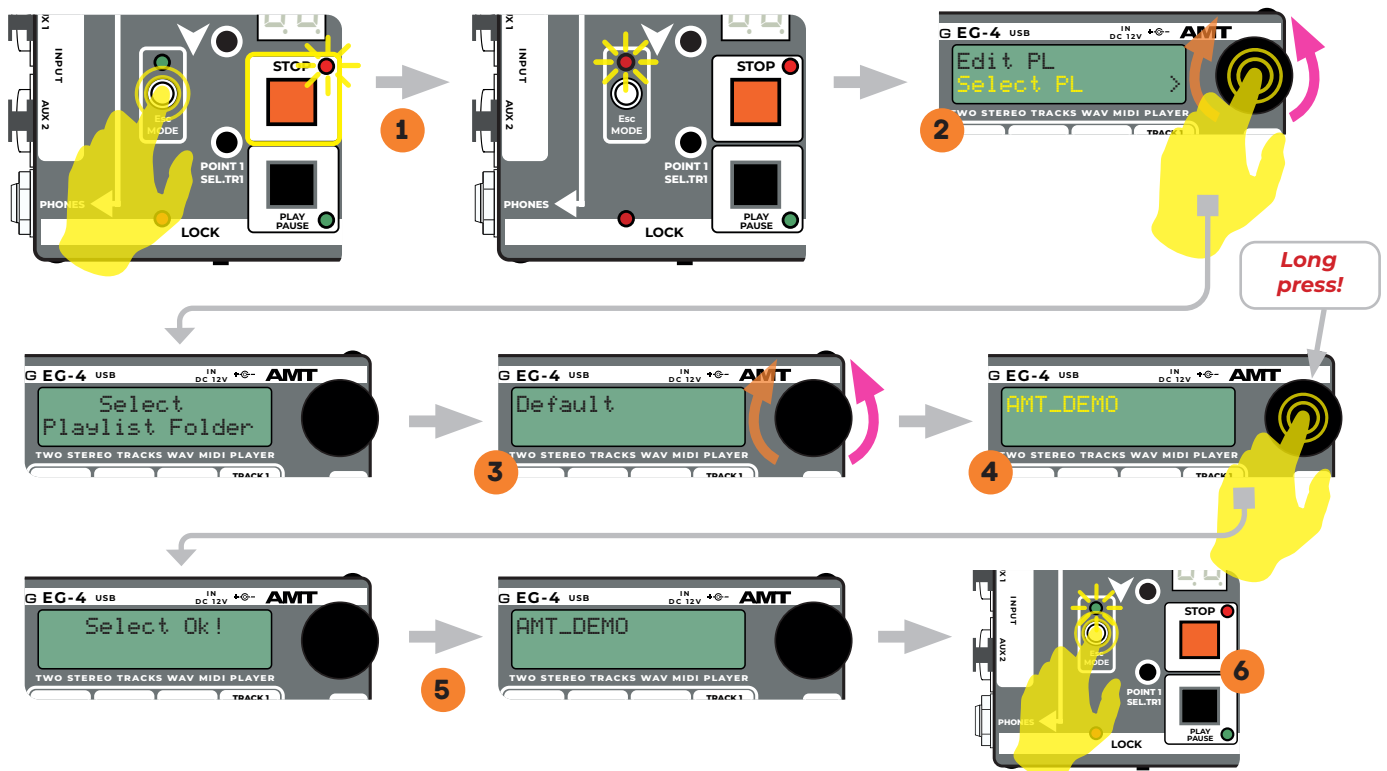


Fig. 4. — The algorithm for changing the current (active) playlist to another one.